



UNIVERSITÄT
LEIPZIG



Exploring the History of the Entertainment Industries with GIS-based Mapping

Antje Dietze

November 7, 2023

Methodenbasar, Digital Lab

Research Centre Global Dynamics, Universität Leipzig

Mapping in cultural and media history: some examples

- Artl@s <https://artlas.huma-num.fr> and Visual contagions <https://www.unige.ch/visualcontagions/>
→ Joyeux-Prunel, B. 2012. “ARTL@S: A Spatial and Transnational Art History. Origins and Positions of a Research Program”, *Artl@s Bulletin* 1 (1): 9–25 <https://docs.lib.purdue.edu/artlas/vol1/iss1/1/>
- Mapping Hispanic Modernity. Cross-border Literary Networks and Cultural Mediators, <https://mapmodern.wordpress.com/>
→ Roig-Sanz, D. und L. Fólica 2021. “Big Translation History: Data Science Applied to Translated Literature in the Spanish-speaking World, 1898–1945”, *Translation Spaces* 10 (2): 231–259, <https://doi.org/10.1075/ts.21012.roi>
- European Cinema Audiences. Entangled Histories and Shared Memories www.europeancinemaaudiences.org
→ van Oort, T. et al. 2020. “Mapping Film Programming across Post-War Europe (1952): Arts and Media”, *Research Data Journal for the Humanities and Social Sciences* 5 (2): 109–125, <https://doi.org/10.1163/24523666-00502009>

Examples of sources used (from Internet Archive <https://archive.org/>)




Sources: Trade papers, almanacs, theater brochures from Germany and the US
 → Mapped with QGIS: spatial distribution, historical change, genre comparison

Adressen-Liste

Kiel-Gaarden. Gaardener Variété. Dir.: Chr. Knees. Tel. 864.
 Kiew. Chateau des Fleurs. Dir.: A. K. Aulshitsky.
 Bad Kissingen. Apollo. Dir.: Ritter. Saison: Mai-September.
 Kolberg. Variété und Cabaret Graf Walderssee, Dir. Franz Möhring.
 Kopenhagen. Tivoli. (Sommerth.). Dir.: Arne Petersen.
 — Circus-Variété (3200 Pers. fasa.). Dir.: O. Claessen u. Olaf Rasmussen.
 Königsberg. Apollo mit Cabaret. Dir.: Reissmüller u. Lubliner.
 — Metropoltheater. Dir. u. Inh.: G. Ragutzky.
 — Flora-Variété. Dir.: Max Trampenau.
 — Cabaret Maxim. Inh.: Fr. Masuhr.
 Königshütte. Hotel zur Königshütte. Inh.: J. Graetz. Tel. 1048.
 Komarem (Ungarn). Café Sport. Inh.: Sigmund Mobnar.
 Krakau. Colosseum. Dir.: Friedmann.
 — Park Krakowsky. Dir.: J. Mrozynsky.
 Landau (Pfalz). Variété Kaiser Friedrich, Dir. H. Köhneemann. Tel. 276.
 Lausanne. Kursaal. — Theatre Lumen.
 Leeds. City-Varieties. — Tivoli-Theater.
 Lehe bei Bremerhaven. Cabaret „Flora“, Rickmerstr. 51. Direkt.: Frelstedt.
 Leipzig. Krystall-Palast. Dir.: Königl. Sächs. Kommisselonsrat Slegmund
 Kohn. — I. Var-Theater. Bühnenhöhe 7 m, Breite 10 m, Vorbau
 15 m breit, 2 m tief. Höhe des Schnürbodens 15 m. — II. Albert-Halle
 (Circus) bei Var.-Vorst. Bühnenhöhe 6 m, Tiefe 8 m, Breite 9 m, Vorbau 14 m
 breit, 5 m tief. — III. Oborer Theatersaal. Bühnenhöhe 6 m, Tiefe 8 m,
 Breite 8 m, Höhe des Schnürbodens 9 m.
 — Etablissement Battenberg, Tauhaerstr. 23/24.
 — Albert-Theater. Inh.: Albert Reimann. (Spielt zeitweise.)
 — Cabaret Blumensäle. Dir.: Baldwin Reimann.
 — Eldorado. Inh.: Theodor Werner.
 Lemberg (Galizien). Colosseum. Bes.: Gebr. Hermann.
 — Variété Bristol. Dir. u. Bes.: Slegmund Zehngut.
 — Casino de Paris. Bes.: Franz D. Moszkowitz. Tel. 1353.
 Lehrte. Variété zum Mittelpunkt. Inh.: Carl Evert.
 Liban (Russl.). Hamburger Concertgarten. Dir.: Dreache.
 Liège. Cirque Variétés. Bes.: A. Wallenda.
 Liegnitz. Central-Theater. Dir.: Otto Kreymeier.
 Lille. Casino des familles. — Olympia. — Kursaal.
 Limbach. Variété Schweizerhaus. Dir.: Ernst Dittlich. Tel. 557.
 Lincoln. Palace.
 Linden l. W. Kaisersaal. Inh.: H. C. Moll.
 Litz a. d. D. Colosseum. Dir.: G. Drössler. Tel. 224.
 Lissabon. Paraiço de Lisboa, rua da Palma 183. Tel. 1985.
 Liverpool. Pavilion-Theater, Broadhead Tour.
 Lodz. Apollo-Theater. Dir.: P. Kronen.
 — Lodzer Concerthaus. — Dir.: Adolf Fischer u. Adolf Vogel.
 — Variété Manteufel. Dir.: Carlo di Donato.
 London. Hippodrome. — Empire-Theatre. — Alhambra-Theatre. — Palace-
 Theatre of Varieties. — London Pavilion. — London Tivoli. — Oxford
 Music Hall. — Mile End Empire. — Euston. — Middlessex. —
 Royal. — Metropol. — South London. — New Grand Clapham. — Granville,
 Waltham-Green. — Camberwell. — Bedford. — Queens-Poplar. — Hammer-
 smith Palace. — Cambridge. — Standart. — Empress, Brixton. — Empire

WINNIPEG



THE THEATRE PERFECT

Presenting
at all
Times the
Best of
European
and American
Vaudeville
Attractions

Paying
Particular
attention to the
Entertainment,
Comfort and
Convenience
of Ladies
and Children

FORT STREET, BETWEEN PORTAGE AND GRAHAM AVENUES

Orpheum Circuit and its Affiliations

M. MEYERFELD, Jr. (San Francisco), President MARTIN BECK (New York), Managing-Director
 EDW. J. SULLIVAN, Resident Manager.

London Office: 39 Charing Cross Road, W.C. Berlin Office: 12 Roonstrasse.

<p>Orpheum Theatre ... San Francisco, Cal. Orpheum Theatre ... Los Angeles, Cal. Orpheum Theatre ... Oakland, Cal. Orpheum Theatre ... Kansas City, Mo. Orpheum Theatre ... New Orleans, La. Orpheum Theatre ... Des Moines, Ia. Orpheum Theatre ... Omaha, Neb. Orpheum Theatre ... Lincoln, Neb. Orpheum Theatre ... Denver, Col. Orpheum Theatre ... Minneapolis, Minn. Orpheum Theatre ... St. Paul, Minn. Orpheum Theatre ... Memphis, Tenn. Orpheum Theatre ... Salt Lake City, Utah Orpheum Theatre ... Ogden, Utah Orpheum Theatre ... Sioux City, Ia. Orpheum Theatre ... Duluth, Minn. Orpheum Theatre ... Winipeg, Man. Sherman Grand ... Calgary, Alta. Empire Theatre ... Edmonton, Alta. Regina Theatre ... Regina, Sask. Clunie Theatre ... Sacramento, Cal. Orpheum Theatre ... Madison, Wis. Yosemite Theatre ... Stockton, Cal. Majestic Theatre ... Chicago, Ill. Palace Theatre ... Chicago, Ill. Olympic Theatre ... Chicago, Ill. Chicago Opera House ... Chicago, Ill. Hayman Theatre ... Chicago, Ill. Columbia Theatre ... St. Louis, Mo. American Theatre ... St. Louis, Mo. Majestic Theatre ... Milwaukee, Wis. Orpheum Theatre ... Portland, Ore. Orpheum Theatre ... Vancouver, B.C. Palace Theatre ... New York City Colonial Theatre ... New York City Alhambra Theatre ... New York City Bronx Theatre ... New York City Orpheum Theatre ... Brooklyn, N.Y. Bushwick Theatre ... Brooklyn, N.Y. Greenpoint Theatre ... Brooklyn, N.Y. Crescent Theatre ... Brooklyn, N.Y. Harlem Opera House ... New York City B. F. Keith's New Theatre ... Philadelphia B. F. Keith's Theatre ... Boston, Mass. B. F. Keith's Hippodrome ... Cleveland, O. B. F. Keith's Prospect Theatre ... Cleveland, O. B. F. Keith's Theatre ... Columbus, O. B. F. Keith's Theatre ... Toledo, O. Keith's Columbia Theatre ... Cincinnati, O. B. F. Keith's Theatre ... Louisville, Ky. Keith's Grand Opera House, Indianapolis In. B. F. Keith's Bijou Theatre ... Boston, Mass. B. F. Keith's Theatre ... Lowell, Mass. B. F. Keith's New Theatre ... Portland, Me. B. F. Keith's New Theatre, Manchester, N.H. B. F. Keith's Theatre ... Jersey City, N.Y. B. F. Keith's Theatre ... Providence, R.I. B. F. Keith's Theatre ... Pawtucket, R.I. Victoria Theatre ... New York City Proctor's Theatre ... Newark, N.J. Proctor's Theatre ... Troy, N.Y. Proctor's Theatre ... Albany, N.Y. Proctor's Theatre ... Elizabeth, N.J. Proctor's Fifth Avenue Theatre ... New York Proctor's 23rd Street Theatre ... New York Proctor's 84th Street Theatre ... New York Proctor's 125th Street Theatre ... New York Chase's Theatre ... Washington, D.C. Davis Grand Opera House ... Pilttsburg, Pa. Grand Theatre ... Syracuse, N.Y.</p>	<p>Maryland Theatre ... Baltimore, Md. Shea's Theatre ... Buffalo, N.Y. Shea's Theatre ... Toronto, Ont. Temple Theatre ... Detroit, Mich. Temple Theatre ... Rochester, N.Y. Poll's Theatre ... Worcester, Mass. Poll's Theatre ... Springfield, Mass. Poll's Theatre ... Hartford, Conn. Poll's Theatre ... New Haven, Conn. Poll's Theatre ... Bridgeport, Conn. Poll's Theatre ... Waterbury, Conn. Poll's Theatre ... Wilkesbarre, Pa. Poll's Theatre ... Scranton, Pa. Majestic Theatre ... Paterson, N.J. Trent Theatre ... Trenton, N.J. Broadway Theatre ... Camden, N.J. Majestic Theatre ... London, Ont. Temple Theatre ... Hamilton, Ont. Dominion Theatre ... Ottawa, Que. Auditorium Theatre ... Quebec, Que. Henderson's Music Hall ... Coney Island Colonial Theatre ... Dayton, O. Temple Theatre ... Norfolk, Va. Brighton Beach Music Hall, Brighton Beach New Brighton Theatre ... Brighton Beach Morrison's Music Hall ... Rockaway Beach Orpheum Theatre ... Montreal, Que. Orpheum Theatre ... New Bedford, Mass. Orpheum Theatre ... Allentown, Pa. Orpheum Theatre ... Easton, Pa. Orpheum Theatre ... Harrisburg, Pa. Orpheum Theatre ... Altoona, Pa. Colonial Theatre ... Norfolk, Va. Majestic Theatre ... Johnston, Pa. Garrick Theatre ... Wilmington, Del. Hudson Theatre ... Union Hill, N.J. Forsyth Theatre ... Atlanta, Ga. Grand Opera House ... Atlanta, Ga. Empire Theatre ... Pittsfield, Mass. Colonial Theatre ... Lancaster, Pa. Colonial Theatre ... Erie, Pa. Savoy Theatre ... Atlantic City, N.J.</p>
--	--

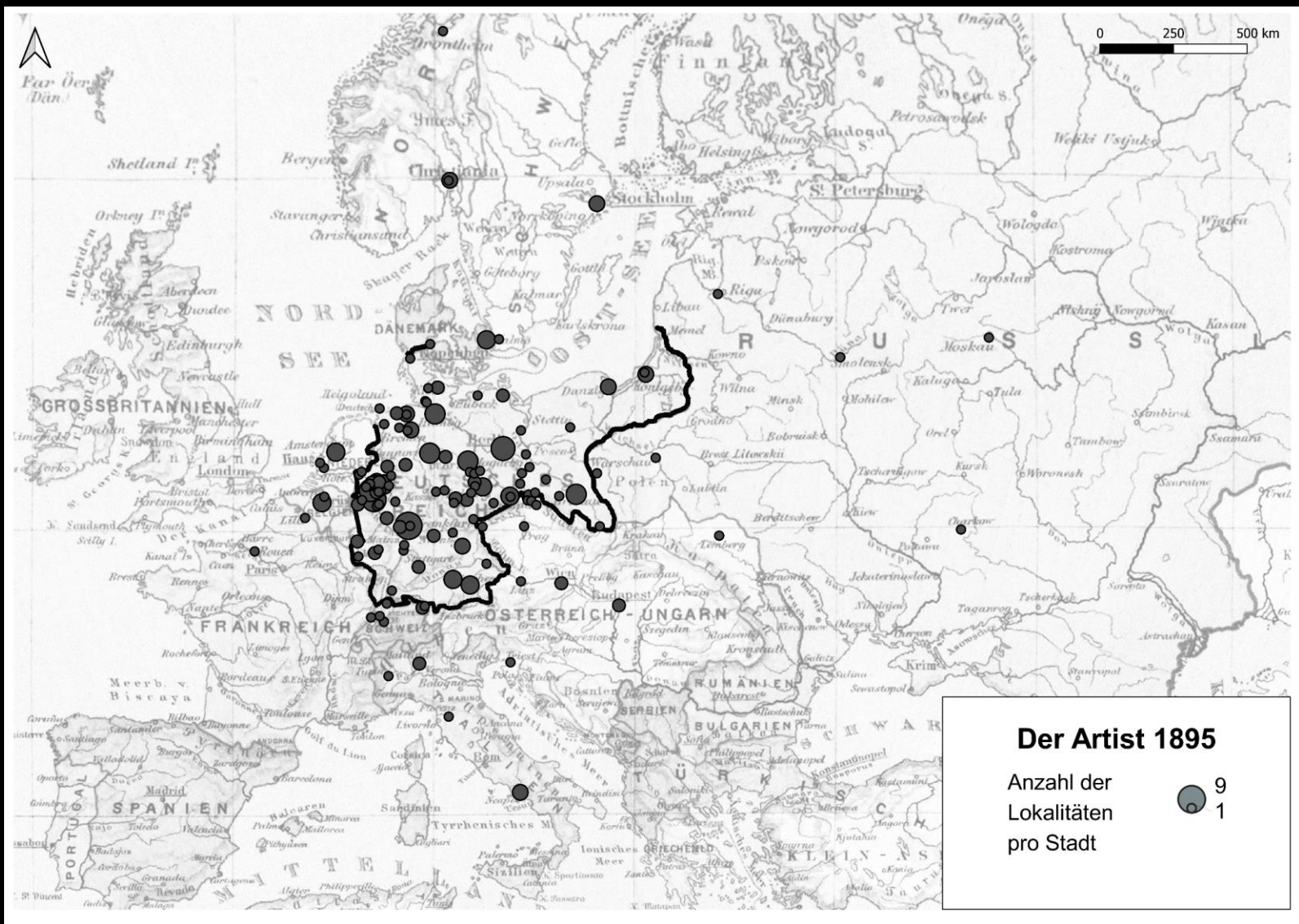
EUROPEAN AFFILIATIONS

<p>Palace Theatre ... London, Eng. The Victoria Palace ... London, Eng. Alhambra Theatre ... Paris, France Alhambra Theatre ... Glasgow, Scot. The Empire ... Aberdeen, Scot. The Hippodrome ... Liverpool, Eng. The Hippodrome ... Brighton, Eng. The Hippodrome ... Leeds, Eng. The Hippodrome ... Hull, Eng. The Hippodrome ... Birmingham, Eng. The Hippodrome ... Portsmouth, Eng. The Hippodrome ... Edmminster, Eng. The Hippodrome ... Southend, Eng. The Hippodrome ... Margate, Eng. The Hippodrome ... Beacombe, Eng. The Hippodrome ... Southampton, Eng. The Hippodrome ... Sheffield, Eng. The Hippodrome ... Bolton, Eng. The Hippodrome ... St. Helens, Eng. The Hippodrome ... Nottingham, Eng. The Hippodrome ... Blackburn, Eng. The Pavilion Theatre ... Newcastle-on-Tyne, Eng. The Palace ... Manchester, Eng. The Empire ... Wolverhampton, Eng. Opera House ... Tunbridge Wells, Eng. The Grand ... Bristol, Eng.</p>	
--	--

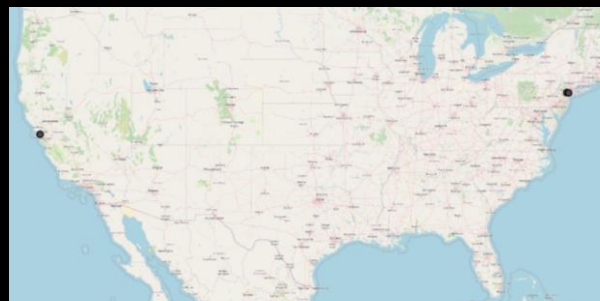
Dietze, Antje, 2023, "The Spatial Organization of Theatrical Entertainment.
Data Sets from German Trade Publications, 1890s to 1920s."

<https://doi.org/10.48736/GD1LNUGZB>, GlobeData, V1

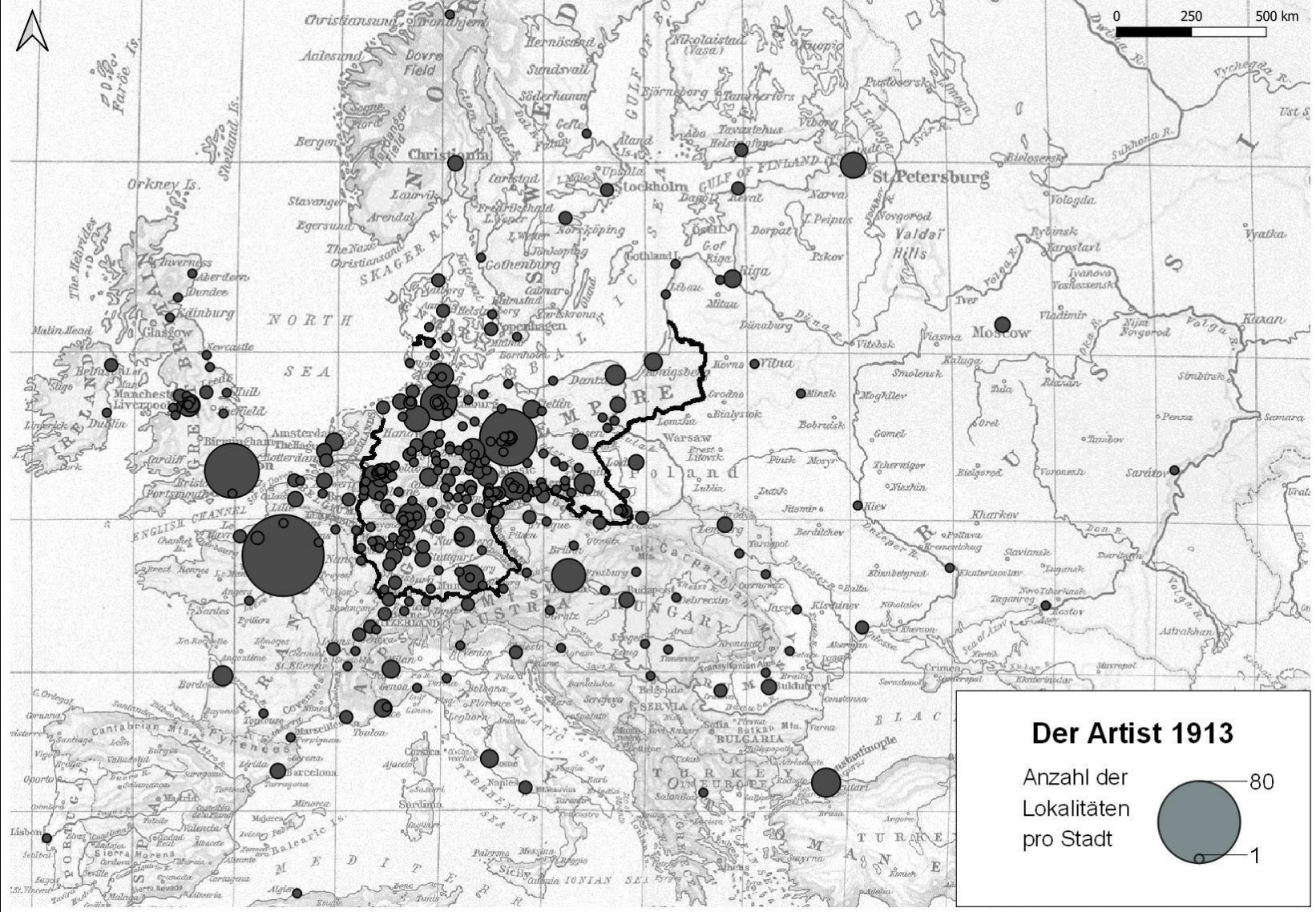
	A	B	C	D	E	F	G
1	city in source	country in source	city	country	members	longitude	latitude
83	Swinemünde	Deutschland	Świnoujście	Poland	1	14.24712	53.91053
84	Tilsit	Deutschland	Sowetsk (Sovetsk)	Russia	1	21.87851	55.08392
85	Trier	Deutschland	Trier	Germany	1	6.63935	49.75565
86	Ulm a. D.	Deutschland	Ulm	Germany	2	9.99155	48.39841
87	Warnemünde	Deutschland	Warnemünde	Germany	1	12.08402	54.1767
88	Weimar	Deutschland	Weimar	Germany	1	11.32903	50.9803
89	Wesermünde	Deutschland	Bremerhaven-Wesermünde	Germany	1	8.5949	53.5474
90	Wiesbaden	Deutschland	Wiesbaden	Germany	3	8.24932	50.08258
91	Würzburg	Deutschland	Würzburg	Germany	2	9.95121	49.79391
92	Zeitz	Deutschland	Zeitz	Germany	1	12.1369	51.04962
93	Zittau	Deutschland	Zittau	Germany	2	14.80764	50.89772
94	Zwickau	Deutschland	Zwickau	Germany	3	12.48839	50.72724
95	Graz	Oesterreich	Graz	Austria	1	15.45	47.06667
96	Danzig	Freistaat Danzig	Gdańsk	Poland	7	18.64912	54.35227
97	Zoppot	Freistaat Danzig	Sopot	Poland	2	18.56003	54.4418
98	Graudenz (Graudziąz)	Polen	Grudziądz	Poland	1	18.75366	53.48411
99	Kattowitz (Katowicz)	Polen	Katowice	Poland	3	19.02754	50.25841
100	Brünn	Tschecho-Slowakei	Brno	Czech Republic	1	16.60796	49.19522
101	Karlsbad	Tschecho-Slowakei	Karlovy Vary	Czech Republic	1	12.87117	50.23271
102	Budapest	Ungarn	Budapest	Hungary	3	19.04045	47.49835
103	Riga	Lettland	Rīga (Riga)	Latvia	2	24.10589	56.946
104	Rotterdam	Holland	Rotterdam	Netherlands	1	4.47917	51.9225



Number of variety entertainment venues per city, based on the address lists of the trade paper *Der Artist*

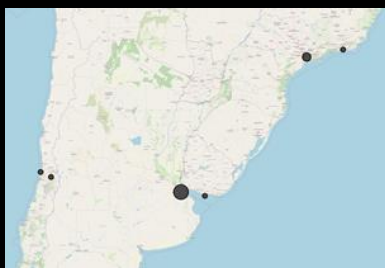
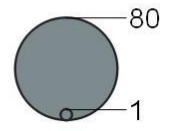


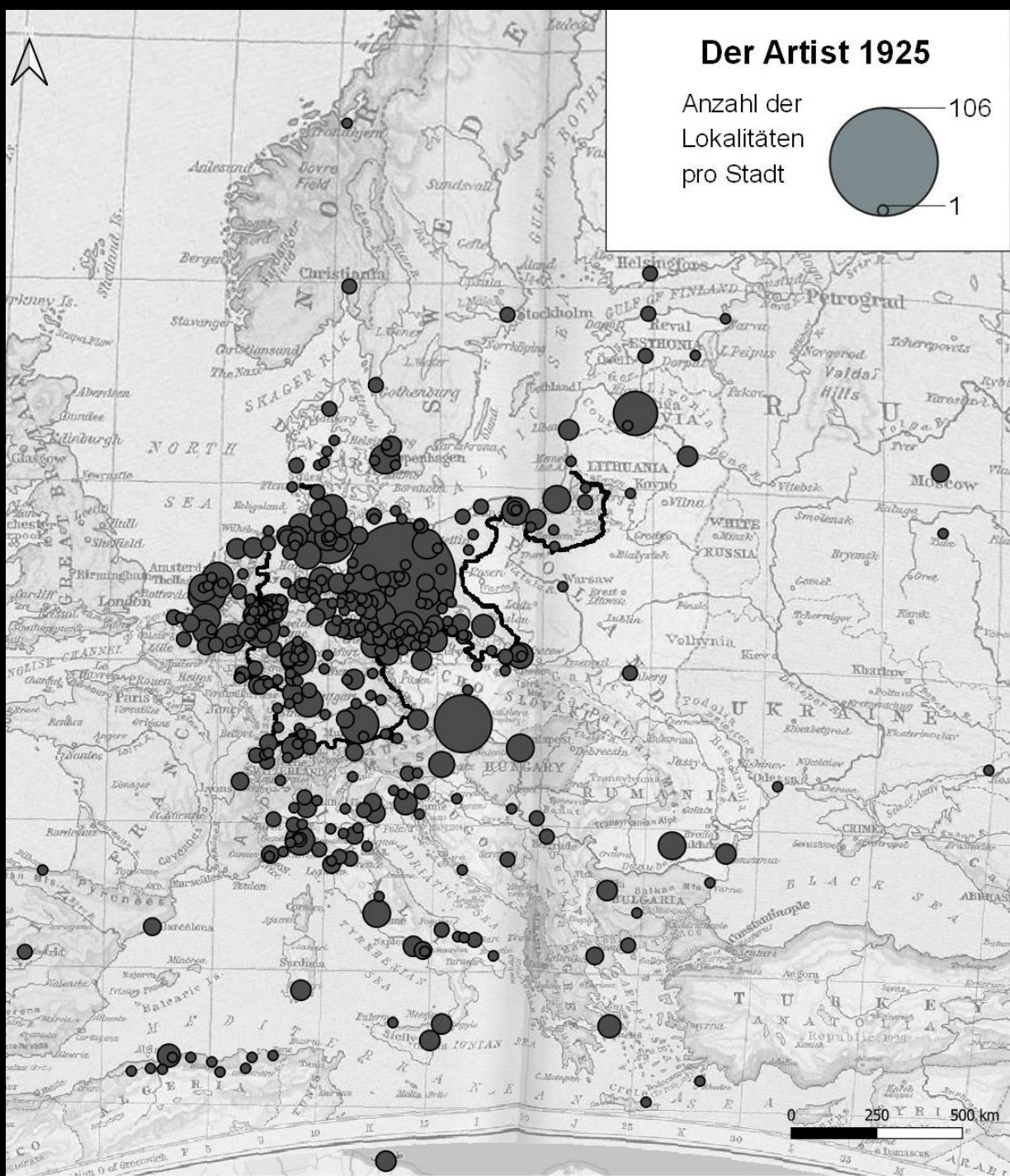
0 250 500 km



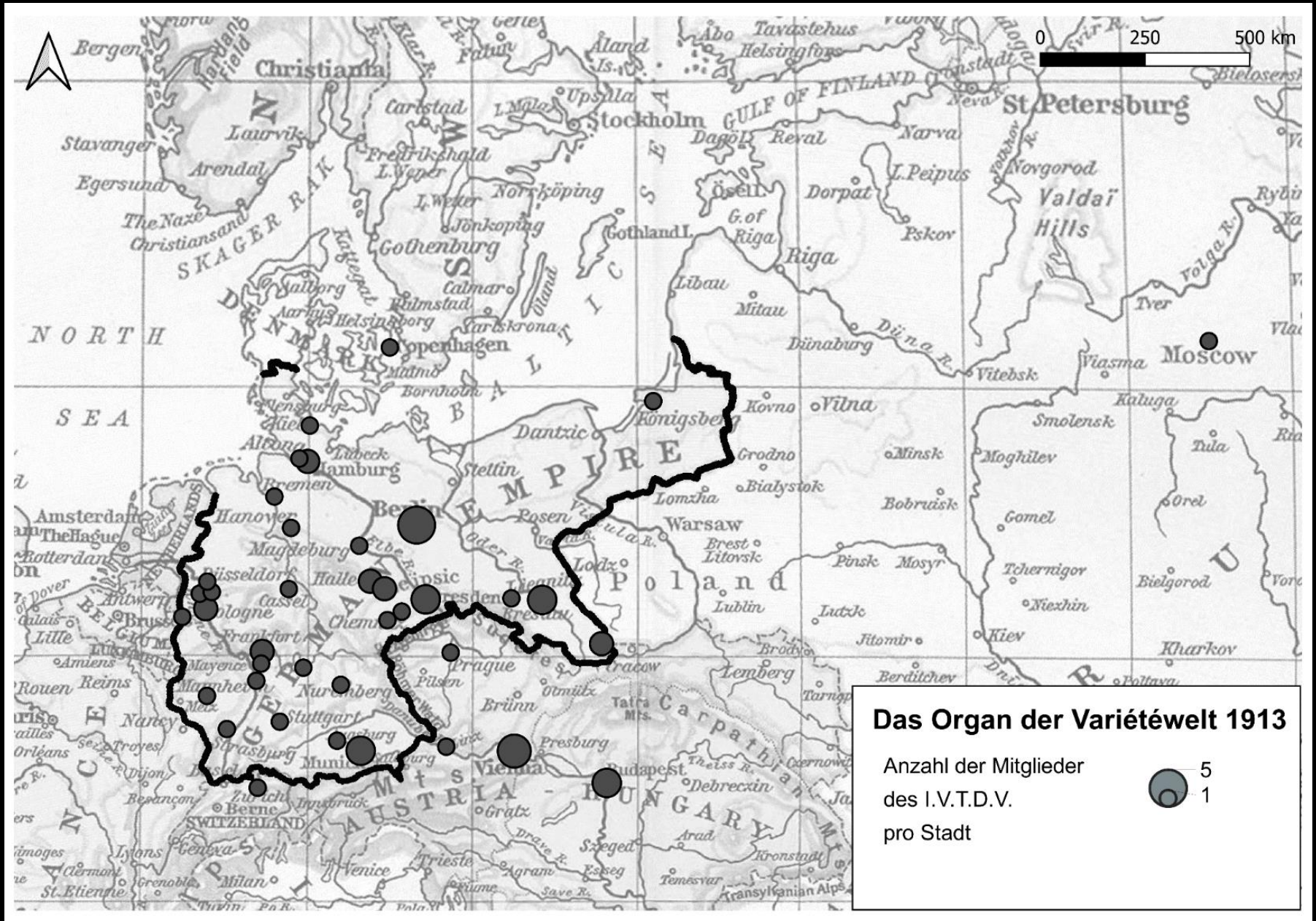
Der Artist 1913

Anzahl der
Lokalitäten
pro Stadt





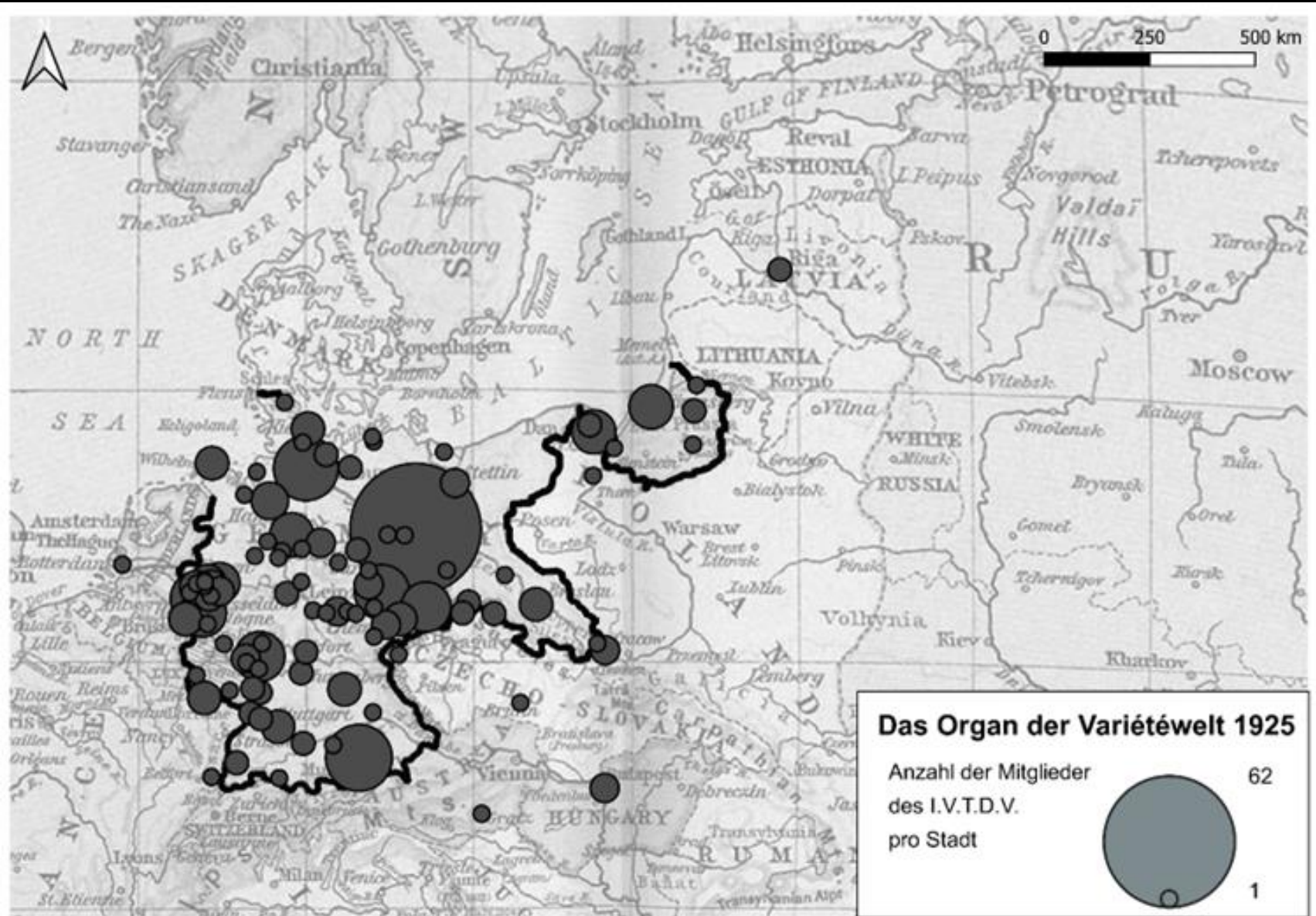
Members of the International variety manager's association per city, based on the address lists of the trade paper *Das Organ der Variétéwelt*



Das Organ der Variétéwelt 1913

Anzahl der Mitglieder
des I.V.T.D.V.
pro Stadt

5
1



These maps were published in:

Antje Dietze (2020): „Wie organisiert man die Vergnügungsindustrie? Internationale Verbände der deutschsprachigen Varietéwelt, 1880–1929“, *Geschichte und Gesellschaft*, 46 (1), 87–121.
<https://doi.org/10.13109/gege.2020.46.1.87>

Further maps in production for regional and genre comparison:

- German-speaking legitimate theater (music and drama)
- Theater landscape of North America (all genres)
- Territorialization strategies in legitimate and vaudeville theater
- Ethnic differentiation in the theater field

Challenges:

- False objectivity of maps vs. model function: how to visualize?
- Incomplete data / representation of historical knowledge and perspective
- Location vs. function – what's in a point?
- Static visualization vs. historical change, processes of exchange